

MORGAN AND MORECAMBE OFFSHORE WIND FARMS: TRANSMISSION ASSETS

Environmental Statement

Volume 2, Figures – Part 5 of 5

December 2024
Rev: ES01

MOR001-FLO-CON-ENV-FIG-0004
MRCNS-J3303-RPS-10161

PINS Reference: EN020028
APFP Regulations: 5(2)(a)
Document reference: F2.10/ES01

Document status					
Version	Purpose of document	Approved by	Date	Approved by	Date
F01	For issue: Application	AS	September 2024	IM	September 2024
ES01	S51 advice update	AS	December 2024	IM	December 2024

The report has been prepared for the exclusive use and benefit of the Applicants and solely for the purpose for which it is provided. Unless otherwise agreed in writing by RPS Group Plc, any of its subsidiaries, or a related entity (collectively 'RPS') no part of this report should be reproduced, distributed or communicated to any third party. RPS does not accept any liability if this report is used for an alternative purpose from which it is intended, nor to any third party in respect of this report. The report does not account for any changes relating to the subject matter of the report, or any legislative or regulatory changes that have occurred since the report was produced and that may affect the report.

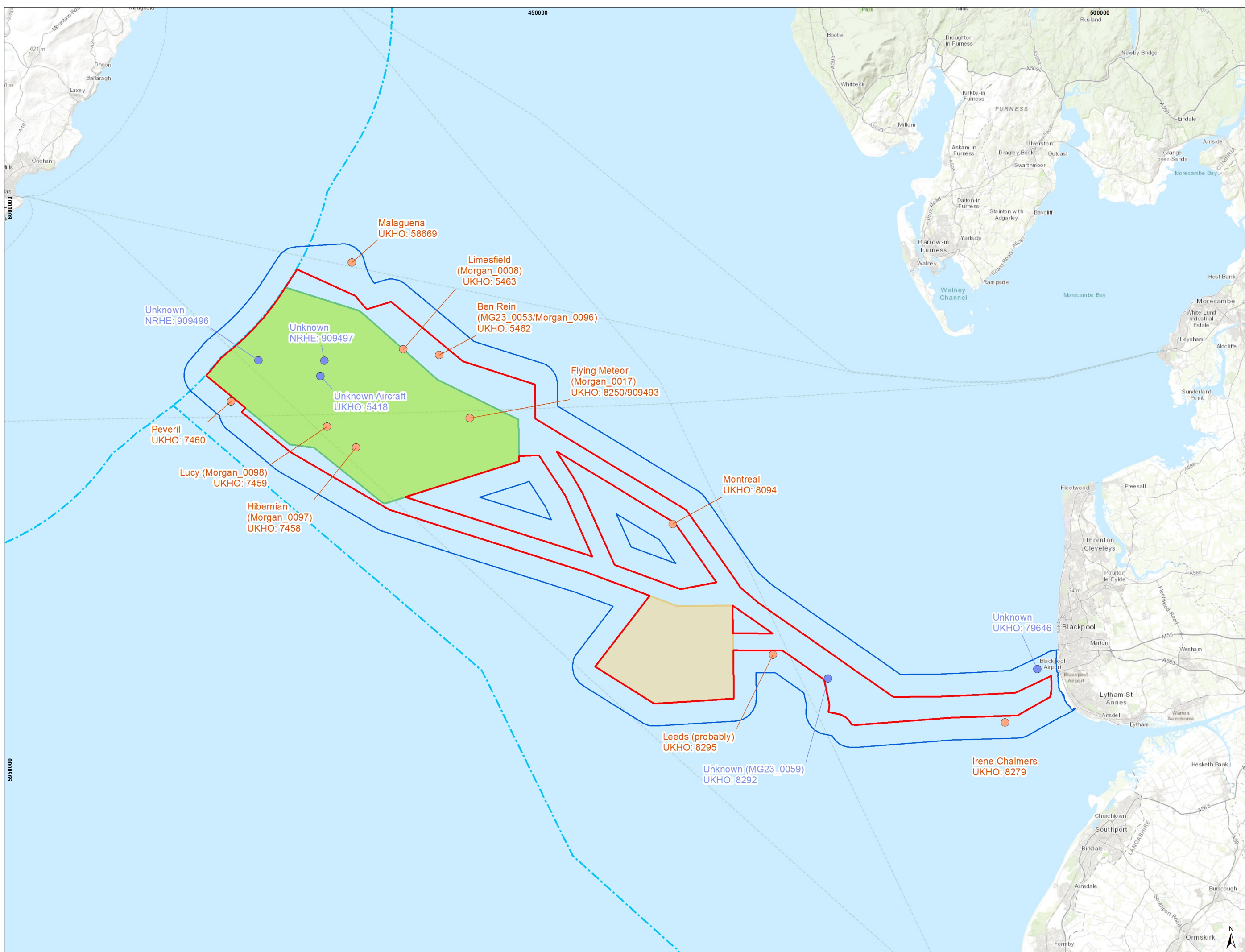
The report has been prepared using the information provided to RPS by its client, or others on behalf of its client. To the fullest extent permitted by law, RPS shall not be liable for any loss or damage suffered by the client arising from fraud, misrepresentation, withholding of information material relevant to the report or required by RPS, or other default relating to such information, whether on the client's part or that of the other information sources, unless such fraud, misrepresentation, withholding or such other default is evident to RPS without further enquiry. It is expressly stated that no independent verification of any documents or information supplied by the client or others on behalf of the client has been made. The report shall be used for general information only.

Prepared by:

RPS

Prepared for:

**Morgan Offshore Wind Limited,
Morecambe Offshore Windfarm Ltd**



LEGEND

- Morgan and Morecambe Offshore Windfarms: Transmission Assets Order Limits – Offshore
- Morgan Offshore Wind Project: Generation Assets
- Morecambe Offshore Windfarm: Generation Assets
- Marine Archaeology Study Area
- Marine archaeology identified
- Unknown wrecks
- Jurisdictional Boundary

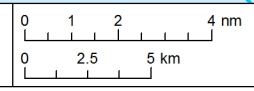
MORECAMBE
acobra | FLOTATION ENERGY

EnBW **RPS**
Partners in UK offshore wind | A TERNAL TECH COMPANY

Figure 8.4
Drawing Number:
 RPSE-ES-MAR-E005-04

Project Name:
 MORGAN AND MORECAMBE OFFSHORE WIND FARMS: TRANSMISSION ASSETS

Drawing Title:
 KNOWN AND RECORDED WRECKS WITHIN THE MARINE ARCHAEOLOGY STUDY AREA

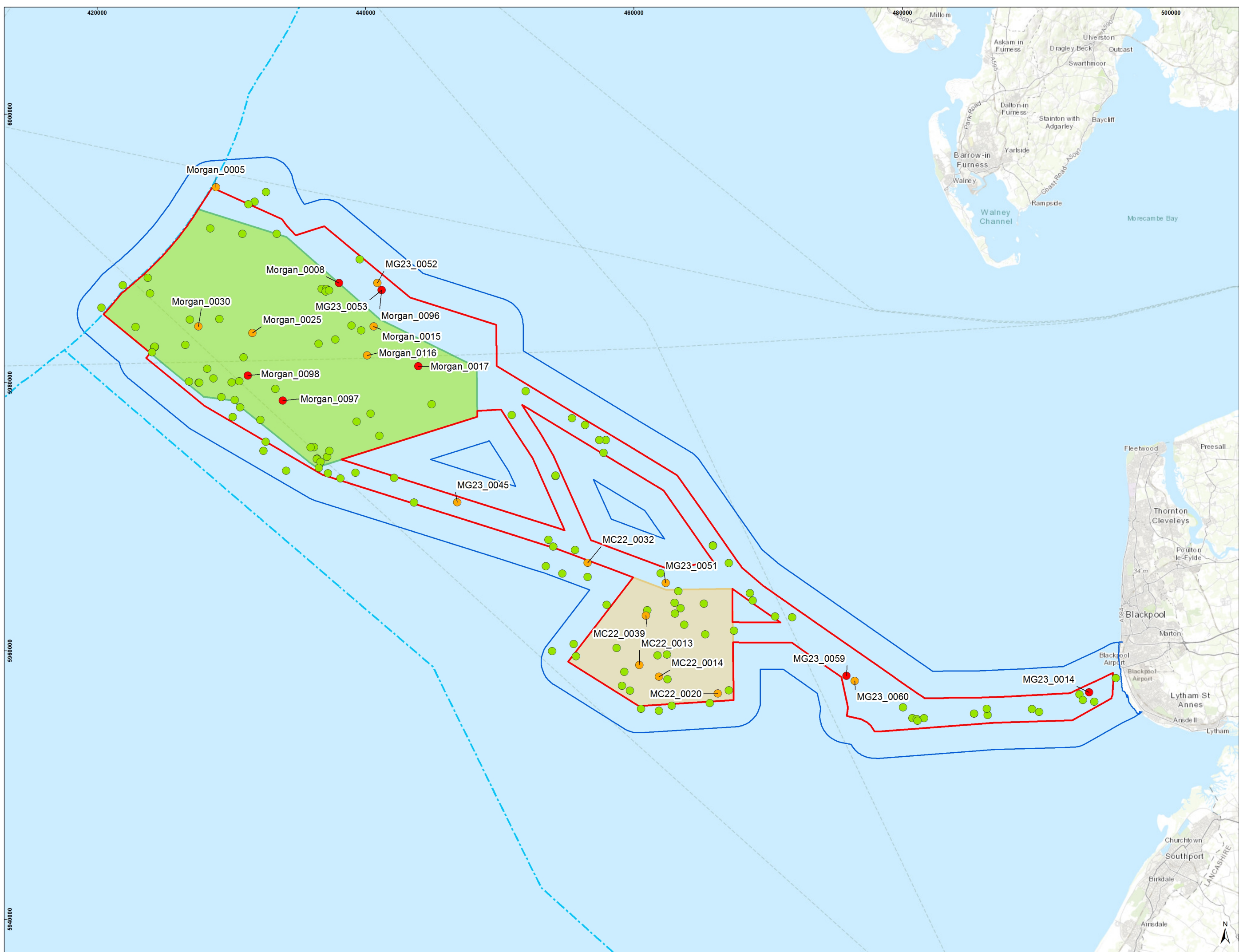


Geodetic Information:
 Datum: ETRS 1989
 Projection: ETRS 1989 UTM Zone 30N
 Scale@379mmx231mm: 1:300,000

Data Sources: Client, The Crown Estate, MMO, NRW, ScotGov, MarineRegions.org

Service Layer Credits: Sources: Esri, HERE, Garmin, Intermap, increment P Corp., GEBCO, USGS, FAO, NPS, NRCAN, GeoBase, IGN, Kadaster NL, Ordnance Survey, Esri Japan, METI, Esri China (Hong Kong), (c) OpenStreetMap contributors, and the GIS User Community

VER	DATE	DETAILS	BY	CHECK
00	22/04/24	Initial Issue	MJ	LD
04	17/09/24	Final	MJ	BM



LEGEND

- Morgan and Morecambe Offshore Windfarms: Project: Generation Assets
- Transmission Assets Order Limits – Offshore
- Morgan Offshore Wind Project: Generation Assets
- Morecambe Offshore Windfarm: Generation Assets
- Marine Archaeology Study Area
- Jurisdictional Boundary

Archaeological Anomalies Potential

- High
- Medium
- Low

MORECAMBE
ecobra | FLOTATION ENERGY

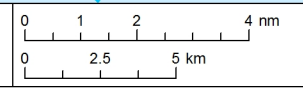
EnBW **RPS**
Partners in UK offshore wind | A TERNATI COMPANY

Figure 8.5

Drawing Number:
 RPSE-ES-MAR-E006-04

Project Name:
 MORGAN AND MORECAMBE OFFSHORE WIND FARMS: TRANSMISSION ASSETS

Drawing Title:
 GEOPHYSICAL ANOMALIES WITHIN THE OFFSHORE ORDER LIMITS AND MARINE ARCHAEOLOGY STUDY AREA

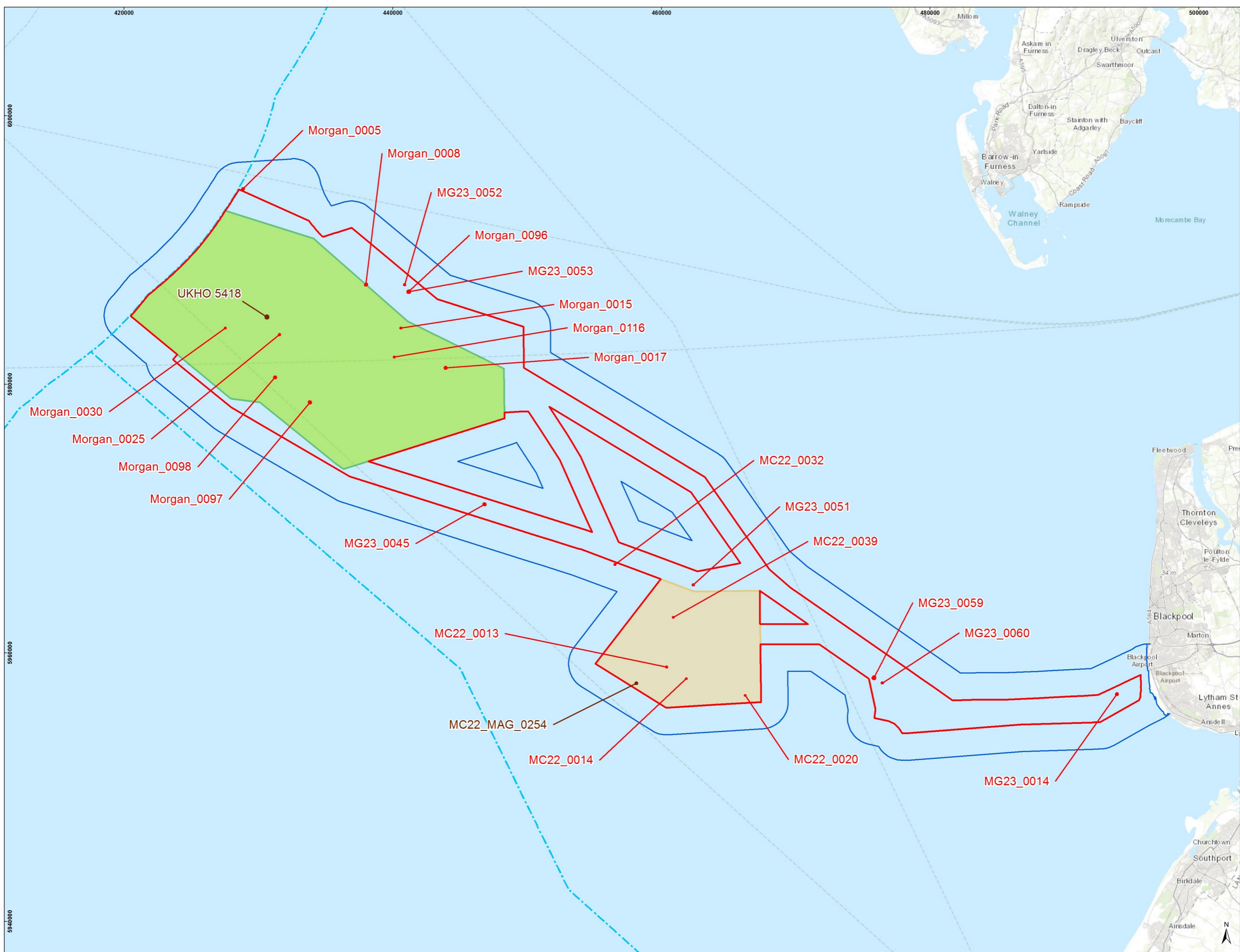


Geodetic Information:
 Datum: ETRS 1989
 Projection: ETRS 1989 UTM Zone 30N
 Scale@379mmx231mm: 1:250,000

Data Sources: Client, The Crown Estate, MMO, NRW, ScotGov, MarineRegions.org

Service Layer Credits: Sources: Esri, HERE, Garmin, Intermap, increment P Corp., GEBCO, USGS, FAO, NPS, NRCAN, GeoBase, IGN, Kadaster NL, Ordnance Survey, Esri Japan, METI, Esri China (Hong Kong), (c) OpenStreetMap contributors, and the GIS User Community

VER	DATE	DETAILS	BY	CHECK
00	22/04/24	Initial Issue	MJ	LD
04	17/09/24	Final	MJ	BM



LEGEND

- Morgan and Morecambe Offshore Windfarms: Project: Generation Assets
- Transmission Assets Order Limits – Offshore
- Morgan Offshore Wind Project: Generation Assets
- Morecambe Offshore Windfarm: Generation Assets
- Marine Archaeology Study Area
- Archaeological Exclusion Zone (AEZ)
- Temporary Archaeological Exclusion Zone (TAEZ)
- Jurisdictional Boundary

MORECAMBE
FLUTATION ENERGY

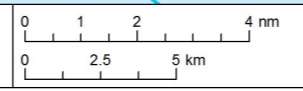
EnBW **RPS**
Partners in UK offshore wind A TETRA TECH COMPANY

Figure 8.6

Drawing Number:
 RPSE-ES-MAR-E008-05

Project Name:
 MORGAN AND MORECAMBE OFFSHORE WIND FARMS: TRANSMISSION ASSETS

Drawing Title:
 PROPOSED AEZS AND TAEZS WITHIN THE TRANSMISSION ASSETS MARINE ARCHAEOLOGY STUDY AREA

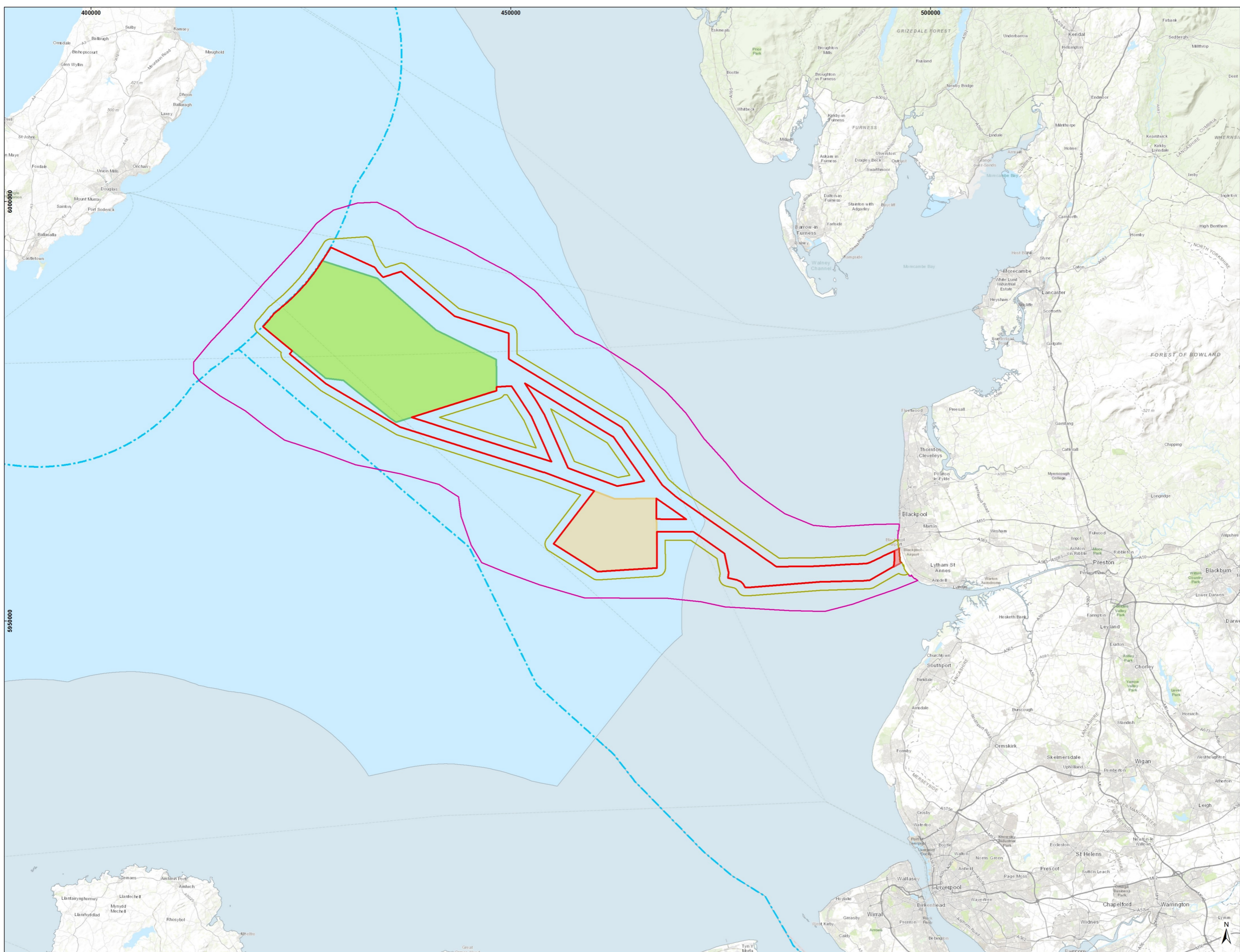


Geodetic Information:
 Datum: ETRS 1989
 Projection: ETRS 1989 UTM Zone 30N
 Scale@379mmx231mm: 1:250,000

Data Sources: Client, The Crown Estate, MMO, NRW, ScotGov, MarineRegions.org

Service Layer Credits: Sources: Esri, HERE, Garmin, Intermap, increment P Corp., GEBCO, USGS, FAO, NPS, NRCAN, GeoBase, IGN, Kadaster NL, Ordnance Survey, Esri Japan, METI, Esri China (Hong Kong), (c) OpenStreetMap contributors, and the GIS User Community

VER	DATE	DETAILS	BY	CHECK
00	22/04/24	Initial Issue	M.J	LD
05	03/12/24	S51 update	M.J	BM



LEGEND

- Morgan and Morecambe Offshore Windfarms: Transmission Assets Order Limits – Offshore
- Morgan and Morecambe Offshore Windfarms: Transmission Assets - Intertidal Infrastructure Area
- Morgan Offshore Wind Project: Generation Assets
- Morecambe Offshore Windfarm: Generation Assets
- Transmission Assets Local Other Sea Users Study Area
- Transmission Assets Regional Other Sea Users Study Area
- Jurisdictional Boundary
- Inshore Waters

MORECAMBE
FLotation Energy

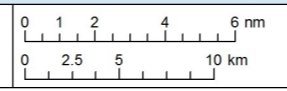
EnBW **RPS**
Partners in UK offshore wind A TERNATI COMPANY

Figure 9.1

Drawing Number:
RPSE-ES-OSU-E001-02

Project Name:
 MORGAN AND MORECAMBE OFFSHORE WIND FARMS: TRANSMISSION ASSETS

Drawing Title:
 THE TRANSMISSION ASSETS OTHER SEA USERS STUDY AREAS

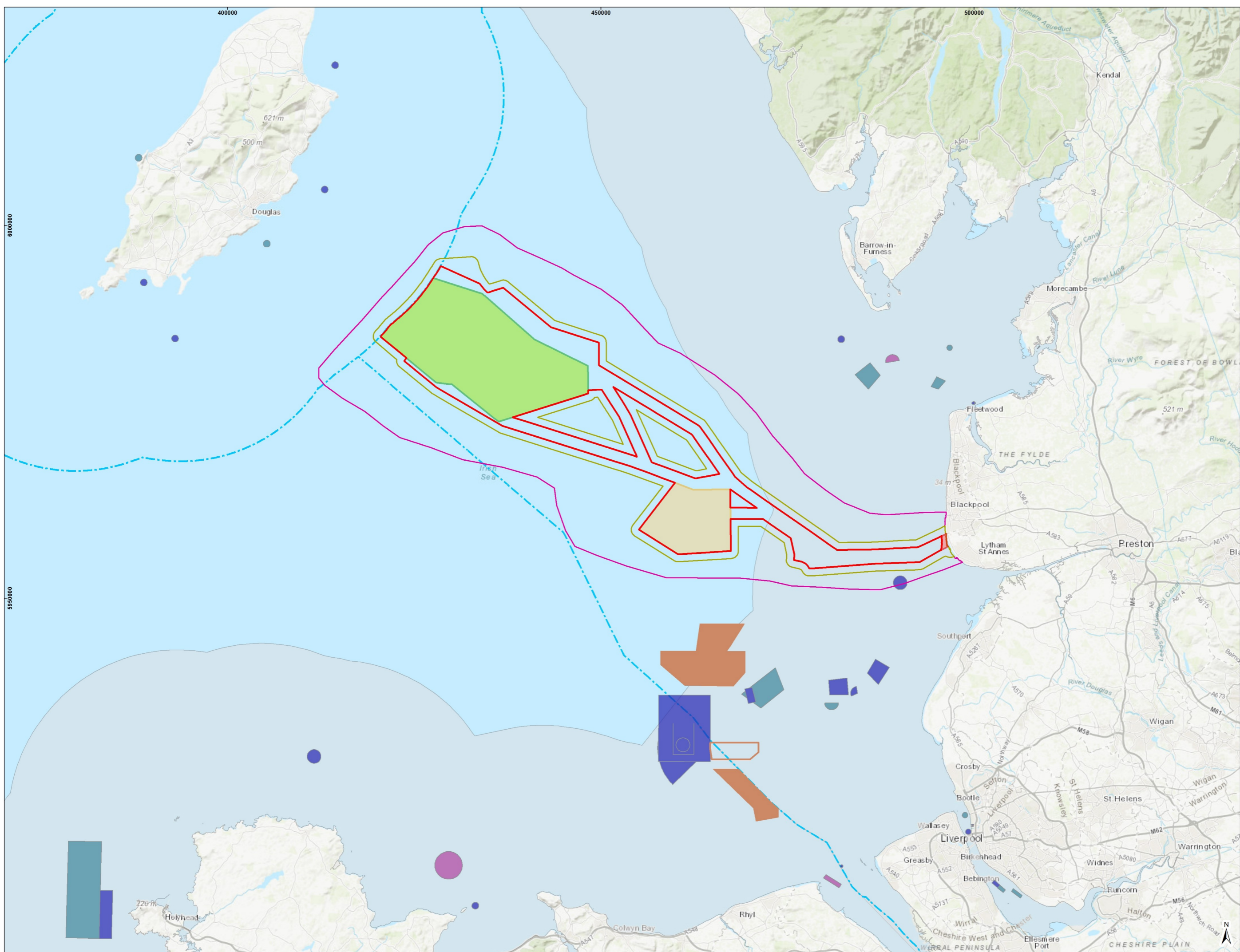


Geodetic Information:
 Datum: ETRS 1989
 Projection: ETRS 1989 UTM Zone 30N
 Scale@379mmx231mm: 1:400,000

Data Sources: Client, The Crown Estate, MMO, NRW, ScotGov, MarineRegions.org

Service Layer Credits: Sources: Esri, HERE, Garmin, Intermap, increment P Corp., GEBCO, USGS, FAO, NPS, NRCAN, GeoBase, IGN, Kadaster NL, Ordnance Survey, Esri Japan, METI, Esri China (Hong Kong), (c) OpenStreetMap contributors, and the GIS User Community

VER	DATE	DETAILS	BY	CHECK
00	07/03/24	Initial Issue	LM	TGB
02	13/09/24	Final	MJ	KH



LEGEND

- Morgan and Morecambe Offshore Windfarms: Transmission Assets Order Limits – Offshore
- Morgan and Morecambe Offshore Wind Farms: Transmission Assets - Intertidal Infrastructure Area
- Morgan Offshore Wind Project: Generation Assets
- Morecambe Offshore Windfarm: Generation Assets
- Transmission Assets Local Other Sea Users Study Area
- Transmission Assets Regional Other Sea Users Study Area

Aggregate Areas

- Exploration and Option Area
- Production Agreement Area

Disposal Sites

- Closed
- Disused
- Open

Other Symbols

- Jurisdictional Boundary
- Inshore Waters

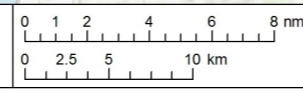


Figure 9.2

Drawing Number:
RPSE-ES-OSU-E002-02

Project Name:
MORGAN AND MORECAMBE OFFSHORE WIND FARMS: TRANSMISSION ASSETS

Drawing Title:
DISPOSAL AND AGGREGATE EXTRACTION SITES IN THE VICINITY OF THE TRANSMISSION ASSETS

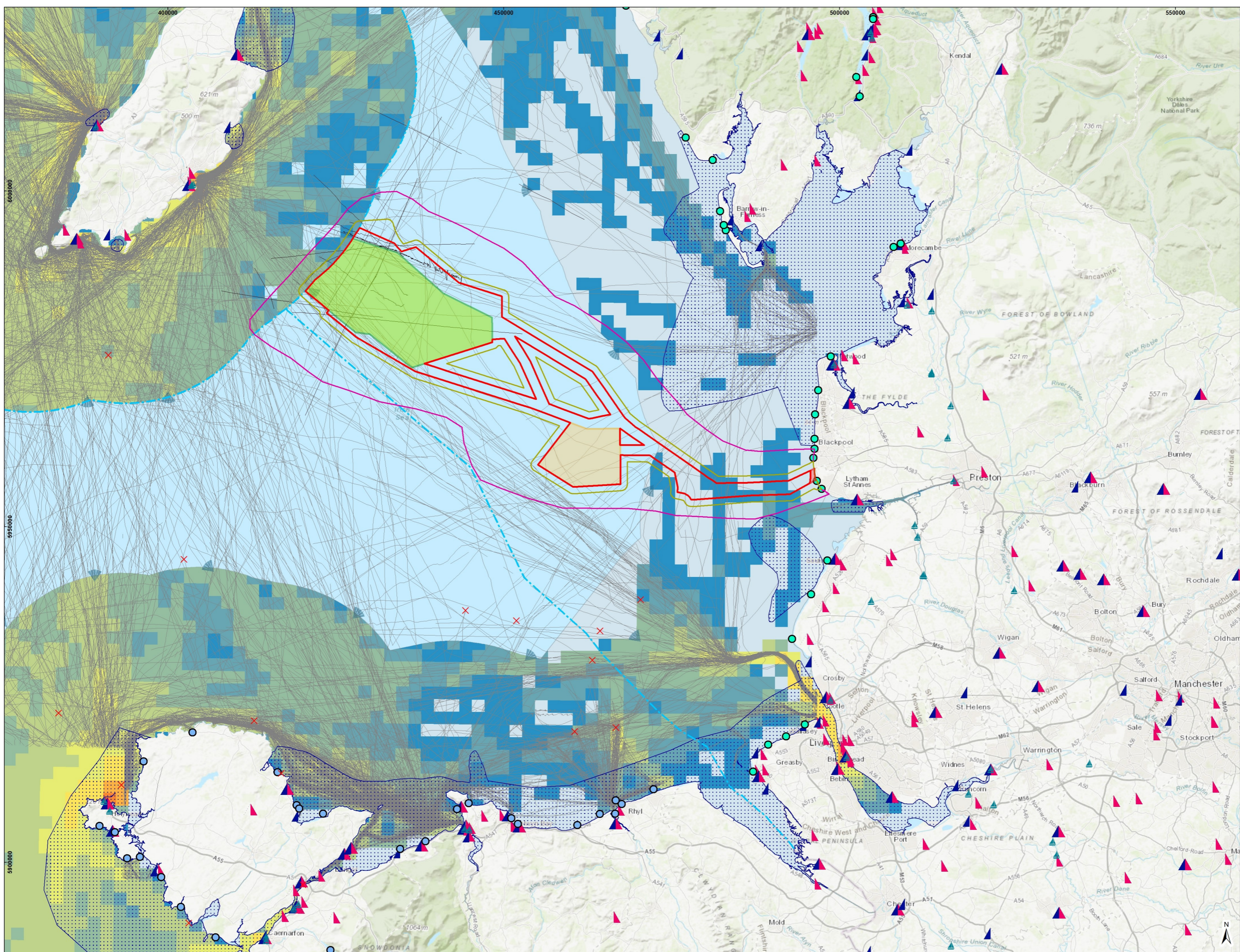


Geodetic Information:
Datum: ETRS 1989
Projection: ETRS 1989 UTM Zone 30N
Scale@379mmx231mm: 1:450,000

Data Sources: Client, The Crown Estate, MMO, NRW, ScotGov, MarineRegions.org, EMODnet

Service Layer Credits: Sources: Esri, HERE, Garmin, Intermap, increment P Corp., GEBCO, USGS, FAO, NPS, NRCAN, GeoBase, IGN, Kadaster NL, Ordnance Survey, Esri Japan, METI, Esri China (Hong Kong), (c) OpenStreetMap contributors, and the GIS User Community

VER	DATE	DETAILS	BY	CHECK
00	07/03/24	Initial Issue	LM	TGB
02	13/09/24	Final	MJ	KH



- LEGEND**
- Morgan and Morecambe Offshore Wind Farms:
 - Transmission Assets Order Limits – Offshore
 - Morgan and Morecambe Offshore Wind Farms:
 - Transmission Assets - Intertidal Infrastructure Area
 - Morgan Offshore Wind Project: Generation Assets
 - Morecambe Offshore Windfarm: Generation Assets
 - Transmission Assets Local Other Sea Users Study Area
 - Transmission Assets Regional Other Sea Users Study Area
 - Jurisdictional Boundary
 - Inshore Waters
 - AIS Tracks for Recreational Vessels (AIS Data 2019 from MarineTraffic)
 - AIS Tracks for Recreational Vessels (AIS Data from Summer 2022 Vessel Traffic Surveys)
 - Wreck Diving Site
 - Designated Bathing Waters Beaches (England)
 - Designated Bathing Waters Beaches (Wales)
- Coastal Atlas**
- Marinas
 - RYA Clubs
 - RYA Training Centres
 - Offshore Routes
 - General Boating Areas
- RYA AIS Intensity**
- Low
 - Medium-Low
 - Medium
 - Medium-High
 - High

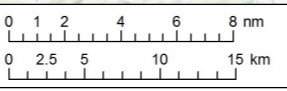


Figure 9.3

Drawing Number:
RPSE-ES-OSU-E003-03

Project Name:
MORGAN AND MORECAMBE OFFSHORE WIND FARMS: TRANSMISSION ASSETS

Drawing Title:
RECREATIONAL ACTIVITIES IN THE VICINITY OF THE TRANSMISSION ASSETS

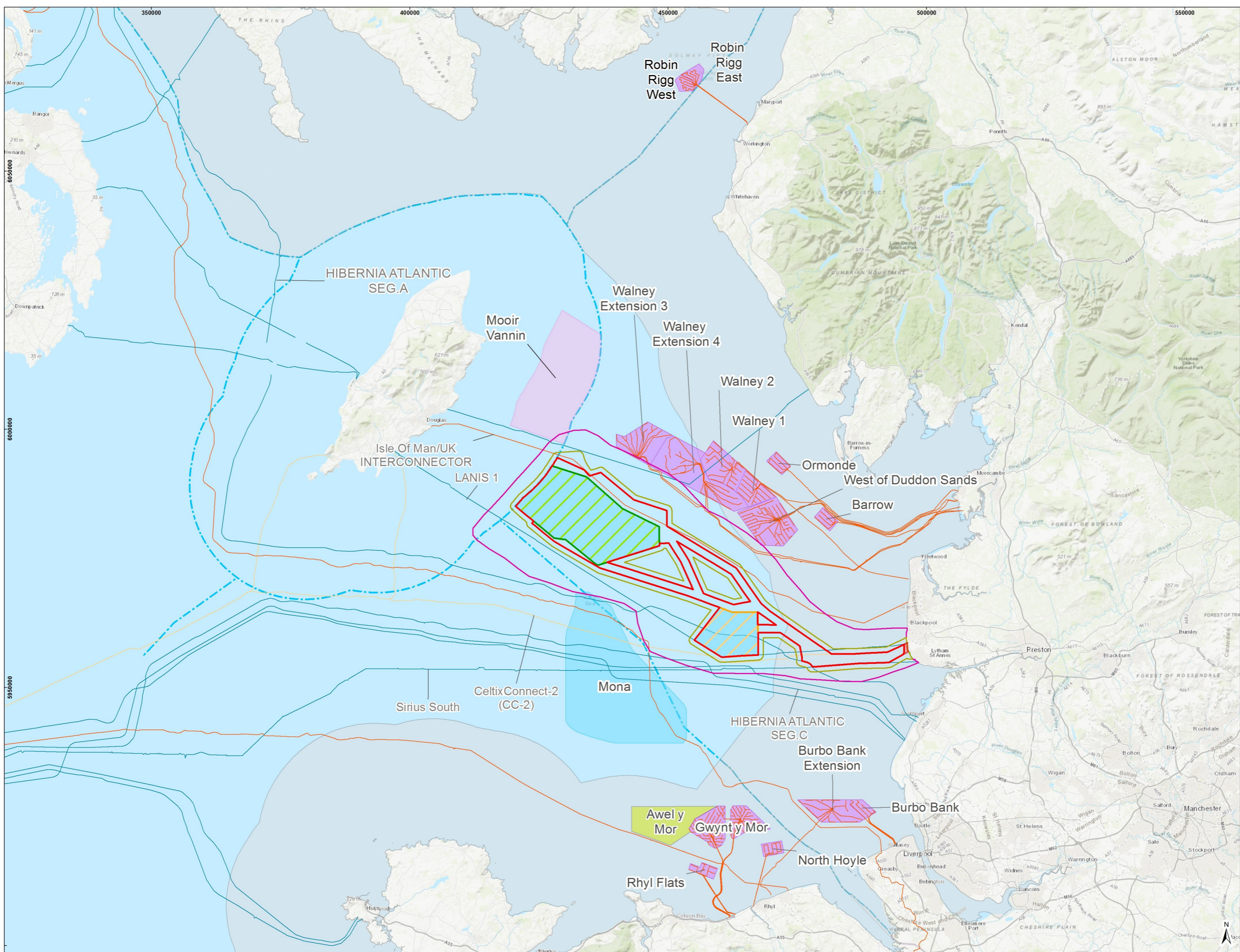


Geodetic Information:
Datum: ETRS 1989
Projection: ETRS 1989 UTM Zone 30N
Scale@379mmx231mm: 1:500,000

Data Sources: Client, The Crown Estate, MMO, NRW, ScotGov, MarineRegions.org

Service Layer Credits: Sources: Esri, HERE, Garmin, Intermap, increment P Corp., GEBCO, USGS, FAO, NPS, NRCAN, GeoBase, IGN, Kadaster NL, Ordnance Survey, Esri Japan, METI, Esri China (Hong Kong), (c) OpenStreetMap contributors, and the GIS User Community

VER	DATE	DETAILS	BY	CHECK
00	07/03/24	Initial Issue	LM	TGB
03	13/09/24	Final	MJ	KH



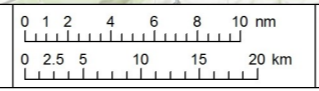
- LEGEND**
- Morgan and Morecambe Offshore Windfarms:
 - Transmission Assets Order Limits – Offshore
 - Morgan and Morecambe Offshore Wind Farms:
 - Transmission Assets - Inter-tidal Infrastructure Area
 - Morgan Offshore Wind Project: Generation Assets
 - Morecambe Offshore Windfarm: Generation Assets
 - Transmission Assets Local Other Sea Users Study Area
 - Transmission Assets Regional Other Sea Users Study Area
 - Inshore Waters
 - Jurisdictional Boundary
 - Other Offshore Wind Farms
 - Active/In Operation
 - Pre-planning Application
 - Application Submitted
 - Consented
 - Cable Routes
 - Cable In Use
 - Power Cable In Use
 - Telecomms Cable Proposed



Figure 9.4
 Drawing Number:
 RPSE-ES-OSU-E004-03

Project Name:
 MORGAN AND MORECAMBE OFFSHORE WIND FARMS: TRANSMISSION ASSETS

Drawing Title:
 OFFSHORE WIND FARMS AND CABLE ROUTES IN THE VICINITY OF THE TRANSMISSION ASSETS



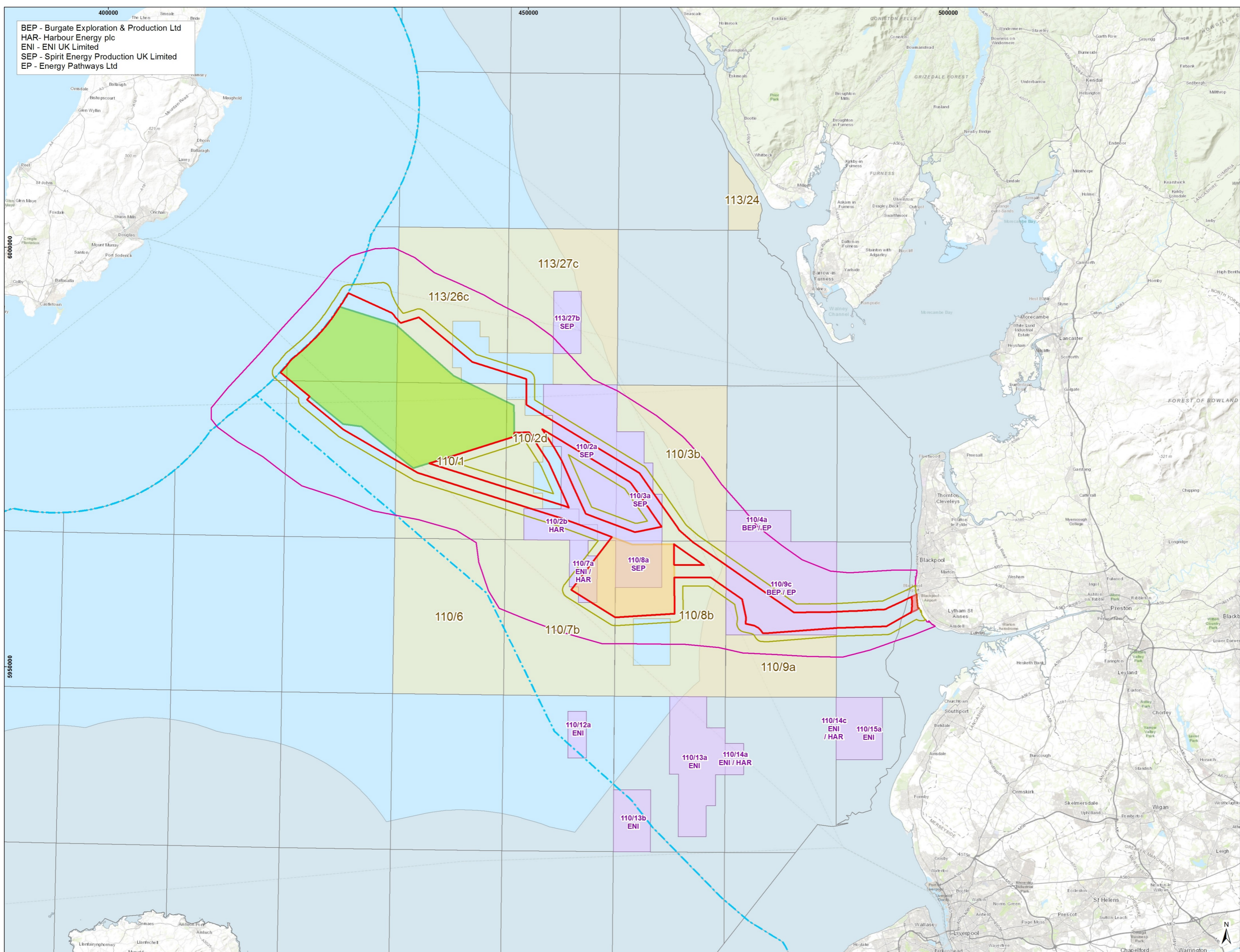
Geodetic Information:
 Datum: ETRS 1989
 Projection: ETRS 1989 UTM Zone 30N
 Scale@379mmx231mm: 1:650,000

Data Sources: Client, The Crown Estate, MMO, NRW, ScotGov, MarineRegions.org

Service Layer Credits: Sources: Esri, HERE, Garmin, Intermap, increment P Corp., GEBCO, USGS, FAO, NPS, NRCAN, GeoBase, IGN, Kadaster NL, Ordnance Survey, Esri Japan, METI, Esri China (Hong Kong), (c) OpenStreetMap contributors, and the GIS User Community

VER	DATE	DETAILS	BY	CHECK
00	07/03/24	Initial Issue	LM	TGB
03	13/09/24	Final	MJ	KH

BEP - Burgate Exploration & Production Ltd
 HAR - Harbour Energy plc
 ENI - ENI UK Limited
 SEP - Spirit Energy Production UK Limited
 EP - Energy Pathways Ltd



LEGEND

- Morgan and Morecambe Offshore Windfarms: Transmission Assets Order Limits – Offshore
- Morgan and Morecambe Offshore Wind Farms: Transmission Assets - Intertidal Infrastructure Area
- Morgan Offshore Wind Project: Generation Assets
- Morecambe Offshore Windfarm: Generation Assets
- Transmission Assets Local Other Sea Users Study Area
- Transmission Assets Regional Other Sea Users Study Area
- Licensed Blocks
- Unlicensed Blocks
- 33rd Licencing Round Blocks
- Jurisdictional Boundary
- Inshore Waters

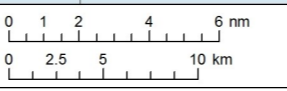
MORECAMBE
 FLOTATION ENERGY

EnBW **RPS**
 Partners in UK offshore wind | A TERNATI COMPANY

Figure 9.5
 Drawing Number:
 RPSE-ES-OSU-E005-03

Project Name:
 MORGAN AND MORECAMBE OFFSHORE WIND FARMS: TRANSMISSION ASSETS

Drawing Title:
 OIL AND GAS LICENCE BLOCKS IN THE VICINITY OF THE TRANSMISSION ASSETS

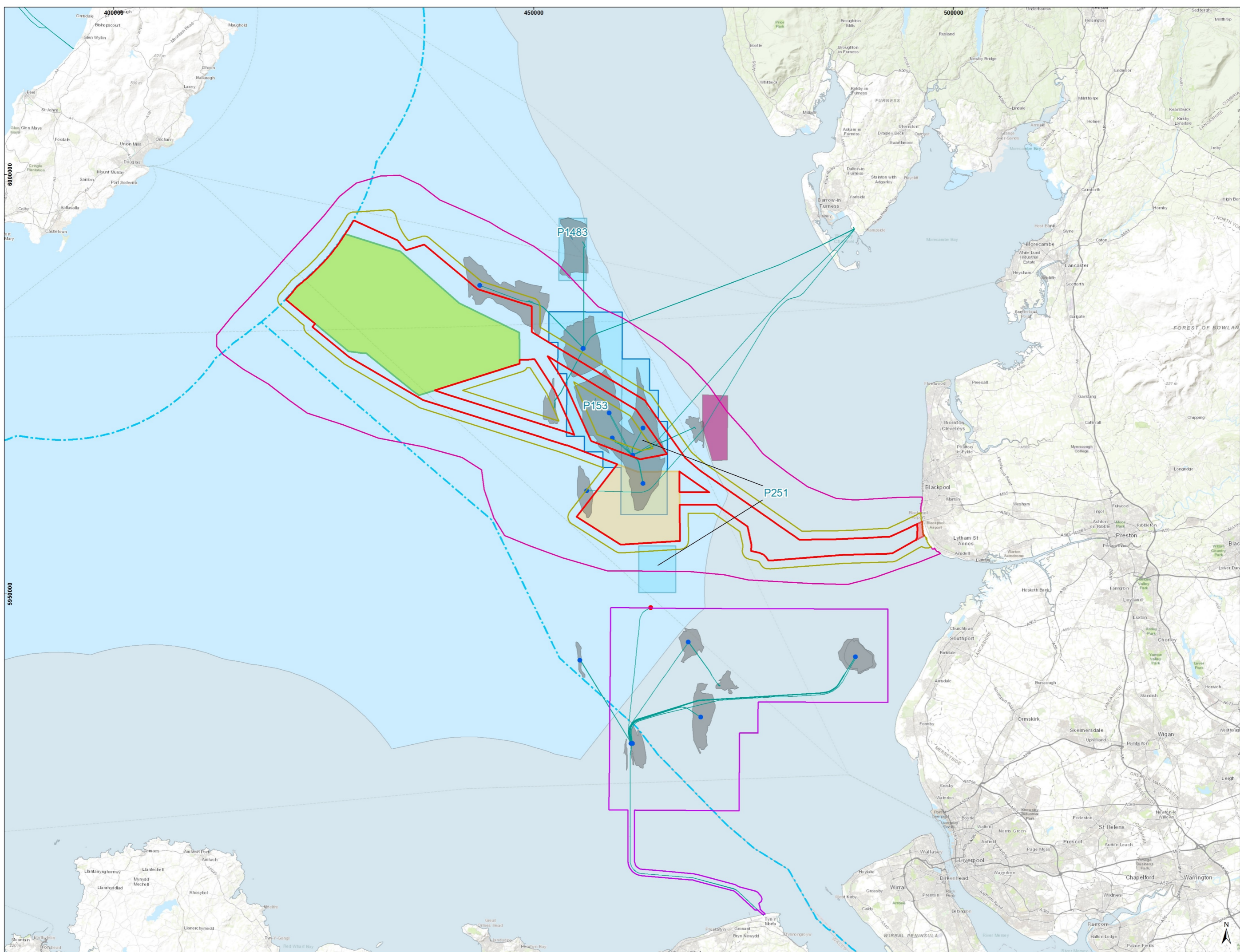


Geodetic Information:
 Datum: ETRS 1989
 Projection: ETRS 1989 UTM Zone 30N
 Scale@379mmx231mm: 1:400,000

Data Sources: Client, The Crown Estate, MMO, NRW, ScotGov, MarineRegions.org

Service Layer Credits: Sources: Esri, HERE, Garmin, Intermap, increment P Corp., GEBCO, USGS, FAO, NPS, NRCAN, GeoBase, IGN, Kadaster NL, Ordnance Survey, Esri Japan, METI, Esri China (Hong Kong), (c) OpenStreetMap contributors, and the GIS User Community

VER	DATE	DETAILS	BY	CHECK
00	07/03/24	Initial Issue	LM	TGB
03	13/09/24	Final	MJ	KH



- LEGEND**
- Morgan and Morecambe Offshore Windfarms: Transmission Assets Order Limits – Offshore
 - Morgan and Morecambe Offshore Windfarms: Intertidal Infrastructure Area
 - Morgan Offshore Wind Project: Generation Assets
 - Morecambe Offshore Windfarm: Generation Assets
 - Transmission Assets Local Other Sea Users Study Area
 - Transmission Assets Regional Other Sea Users Study Area
 - Pipeline
 - Hydrocarbon Platform
 - OSI
 - Hydrocarbon Field (UK)
 - CCS and Underground Gas Storage
 - ENI CCS area
 - Exploration Licences
 - Morecambe Net Zero cluster
 - Jurisdictional Boundary
 - Inshore Waters

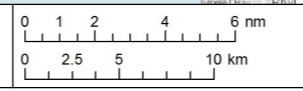


Figure 9.6

Drawing Number:
RPSE-ES-OSU-E006-02

Project Name:
MORGAN AND MORECAMBE OFFSHORE WIND FARMS: TRANSMISSION ASSETS

Drawing Title:
CCS AND OIL AND GAS ACTIVITIES IN THE VICINITY OF THE TRANSMISSION ASSETS

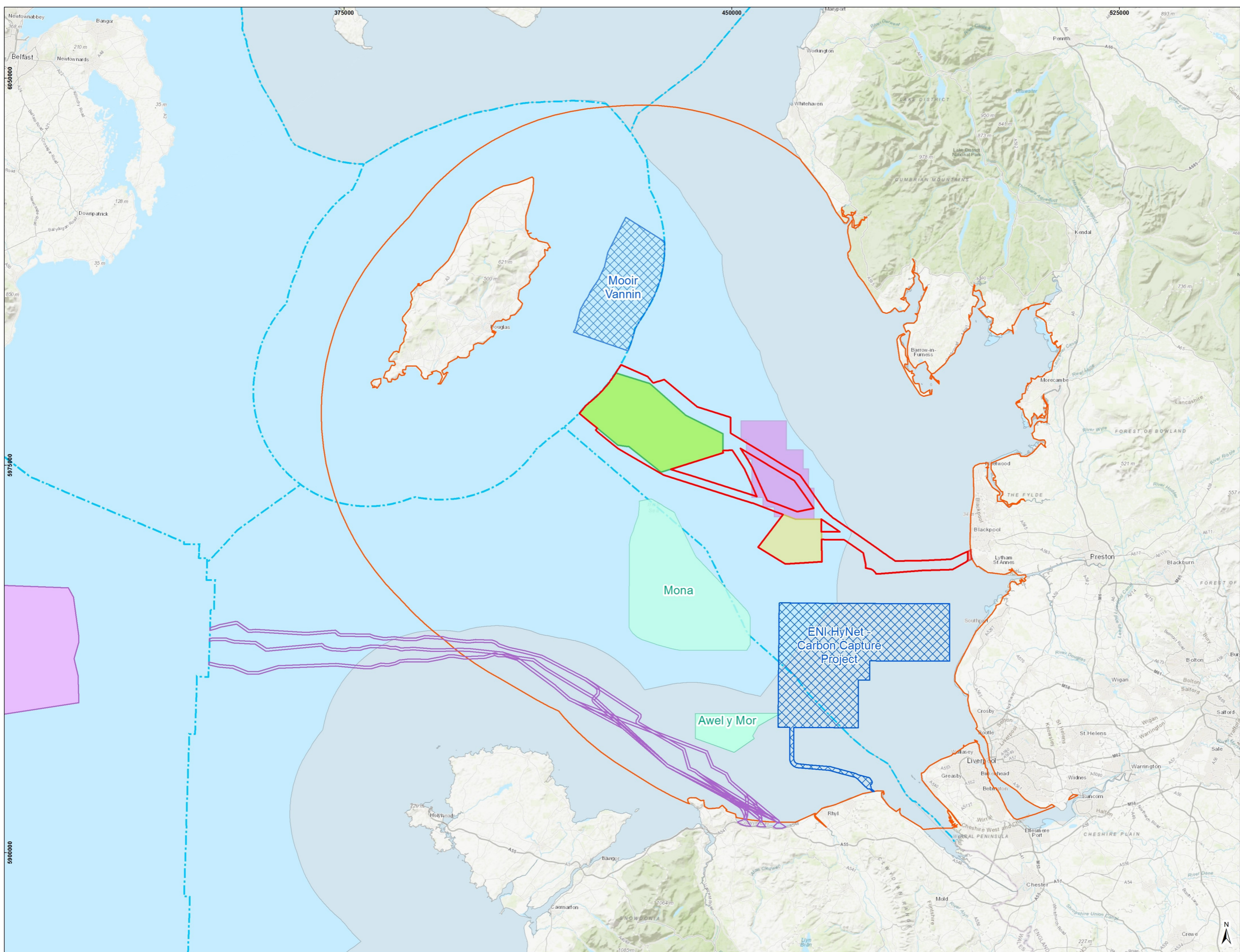


Geodetic Information:
Datum: ETRS 1989
Projection: ETRS 1989 UTM Zone 30N
Scale@379mmx231mm: 1:400,000

Data Sources: Client, The Crown Estate, MMO, NRW, ScotGov, MarineRegions.org, ENI, NSTA

Service Layer Credits: Sources: Esri, HERE, Garmin, Intermap, increment P Corp., GEBCO, USGS, FAO, NPS, NRCAN, GeoBase, IGN, Kadaster NL, Ordnance Survey, Esri Japan, METI, Esri China (Hong Kong), (c) OpenStreetMap contributors, and the GIS User Community

VER	DATE	DETAILS	BY	CHECK
00	07/03/24	Initial Issue	LM	TGB
02	13/09/24	Final	MJ	KH



LEGEND

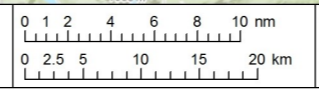
- Morgan and Morecambe Offshore Wind Farms: Transmission Assets Order Limits - Offshore
- Morgan and Morecambe Offshore Wind Farms: Transmission Assets - Intertidal Infrastructure Area
- Morgan Offshore Wind Project: Generation Assets
- Morecambe Offshore Windfarm: Generation Assets
- Cumulative Study Area
- Jurisdictional Boundary
- Inshore Waters
- Tier 1 Projects
- Tier 2 Projects
- Tier 3 Projects
 - Mares Connect Provisional Cable Routes (UK)
 - Mares Connect (Irish FLA)
 - Morecambe Net Zero cluster



Figure 9.7
 Drawing Number:
 RPSE-ES-OSU-E007-06

Project Name:
 MORGAN AND MORECAMBE OFFSHORE WIND FARMS: TRANSMISSION ASSETS

Drawing Title:
 OTHER PROJECTS, PLANS AND ACTIVITIES SCREENED INTO THE CEA



Geodetic Information:
 Datum: ETRS 1989
 Projection: ETRS 1989 UTM Zone 30N
 Scale@379mmx231mm: 1:650,000

Data Sources: Client, The Crown Estate, MMO, NRW, ScotGov, MarineRegions.org, EMODnet, NRW Survey Application P2578_P0143_rev1, Department of Housing Local and Government and Heritage Forshore Application FS007635

Service Layer Credits: Sources: Esri, HERE, Garmin, Intermap, increment P Corp., GEBCO, USGS, FAO, NPS, NRCAN, GeoBase, IGN, Kadaster NL, Ordnance Survey, Esri Japan, METI, Esri China (Hong Kong), (c) OpenStreetMap contributors, and the GIS User Community

VER	DATE	DETAILS	BY	CHECK
00	11/03/24	Initial Issue	MJ	TGB
06	13/09/24	Final	MJ	KH